

REFERENCE PLAN OF PART OF LOT 8, SECTION 20,  
TOWNSHIP 26, OSOYOOS DIVISION YALE  
DISTRICT, PLAN 32159

PLAN EPP128203

PURSUANT TO SECTION 107 OF THE LAND TITLE ACT

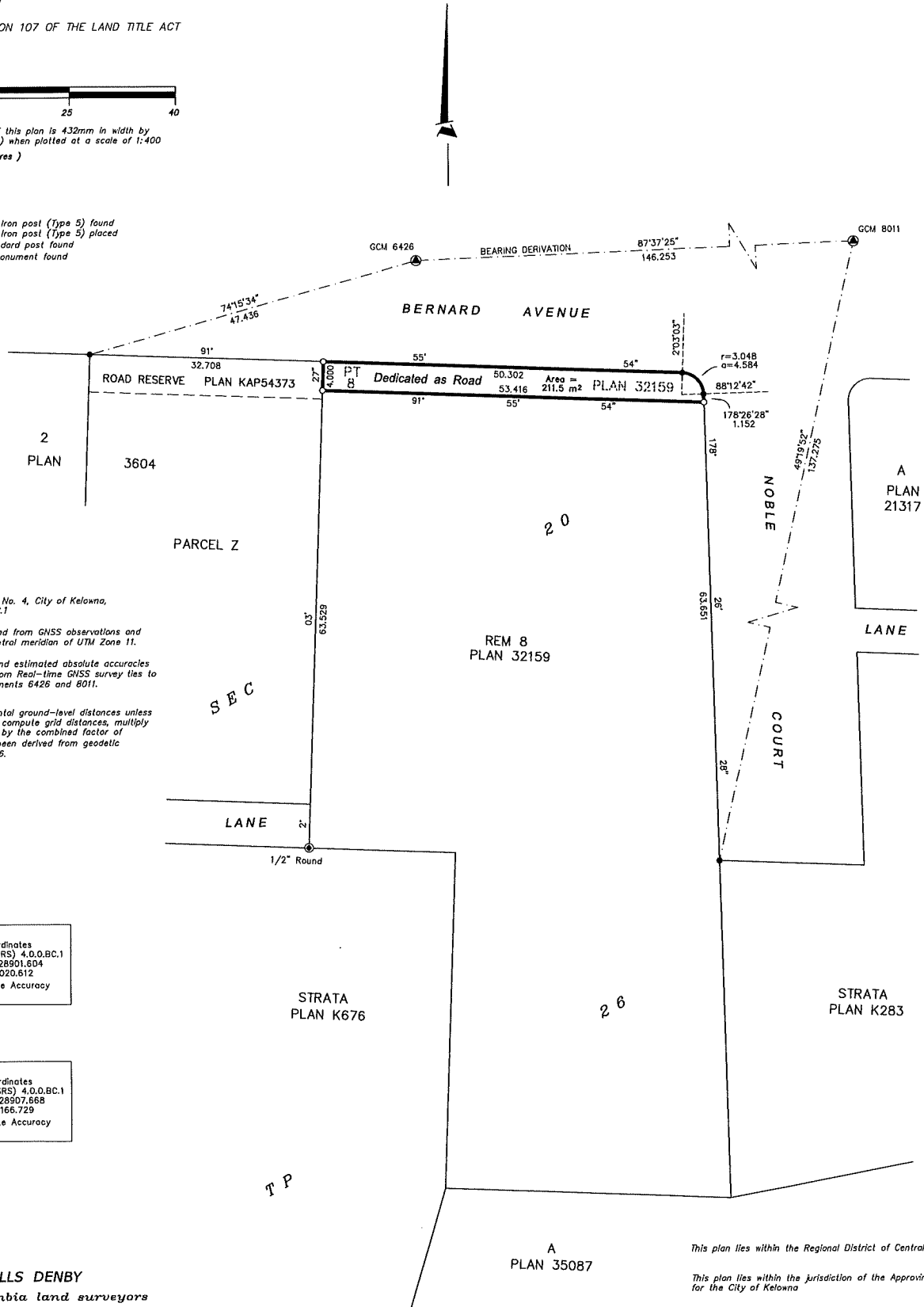
BCGS B2E.083



The intended plot size of this plan is 432mm in width by 560mm in height (C size) when plotted at a scale of 1:400  
( All distances are in metres )

LEGEND

- Denotes Standard Iron post (Type 5) found
- Denotes Standard Iron post (Type 5) placed
- ⊙ Denotes Non-Standard post found
- ▲ Denotes Control Monument found



Integrated Survey Area No. 4, City of Kelowna,  
NAD83 (CSRS) 4.0.0.BC.1

Grid bearings are derived from GNSS observations and  
are referred to the central meridian of UTM Zone 11.

The UTM coordinates and estimated absolute accuracies  
achieved are derived from Real-time GNSS survey ties to  
geodetic control monuments 6426 and 8011.

This plan shows horizontal ground-level distances unless  
otherwise specified. To compute grid distances, multiply  
ground-level distances by the combined factor of  
0.9999303 which has been derived from geodetic  
control monument 6426.

GCM 6426  
UTM Zone 11 coordinates  
Datum: NAD83(CSRS) 4.0.0.BC.1  
UTM northing: 5528901.604  
UTM easting: 323020.612  
Estimated Absolute Accuracy  
Achieved: 0.02m.

GCM 8011  
UTM Zone 11 coordinates  
Datum: NAD83(CSRS) 4.0.0.BC.1  
UTM northing: 5528907.668  
UTM easting: 323168.729  
Estimated Absolute Accuracy  
Achieved: 0.02m.

This plan lies within the Regional District of Central Okanagan.

This plan lies within the Jurisdiction of the Approving Officer  
for the City of Kelowna

The field survey represented by this plan was completed on  
the 21st day of March, 2023.

Robert T. Macdonald, BCLS 873

RUNNALLS DENBY

british columbia land surveyors

259A Lawrence Avenue Kelowna, B.C. V1Y 6L2  
Phone: (250)763-7322 Fax: (250)763-4413  
Email: rob@runnallsdenby.com

DWG. No.: 16384 ROAD

FILE: 16364